

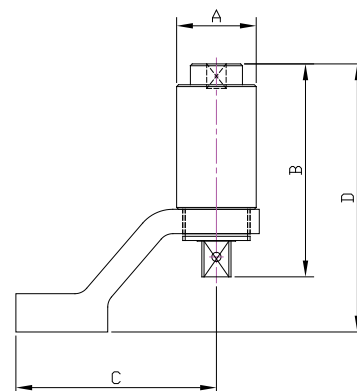
Manual Torque Multiplier Small Diameter Series

Technical Specifications

Small diameter series manual multipliers apply a torque 5, 15, 22, 25 or 125 times greater than that set by the torque wrench which drives the multiplier. This means a dramatic reduction in lever length and the operator effort.



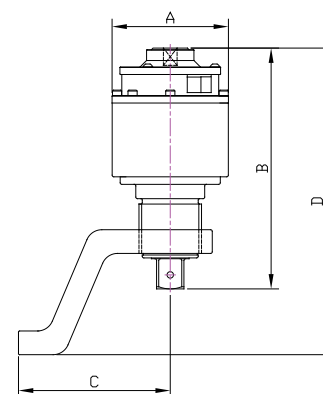
Illustration shown is Model 72/25 series.



52 & 72 Series

Model	Part Code	Range		Ratio	Input Square in	Output Square in	A mm	B mm	C mm	D mm	Tool Weight kg	Reaction Weight kg
		Nm	lbf.ft									
52/22	18052	1,000	740	22:1	1/2"	3/4"	52	139	131	175	1.4	0.85
52/22	18084	1,000	740	22:1	1/2"	3/4"	52	150.1	131	186.3	1.6	0.85
72/5	18014	1,000	740	5:1	1/2"	3/4"	72	144	165	188	2.4	0.66
72/5	18015	1,500	1,100	5:1	1/2"	1"	72	144	165	188	2.4	0.66
72/5	18017	2,000	1,450	5:1	3/4"	1"	72	144	165	188	2.4	0.66
72/25	18018	1,000	740	25:1	1/2"	3/4"	72	165	165	188	2.7	0.66
72/25	18019	2,000	1,450	25:1	1/2"	1"	72	165	165	188	2.7	0.66
72/25	18081	1,000	740	25:1	1/2"	3/4"	72	174	165	218	3.0	0.66
72/25	18082	2,000	1,450	25:1	1/2"	1"	72	174	165	218	3.0	0.66
30/5	18003	3,000	2,200	5:1	3/4"	1"	108	190.4	141	223	5.0	2
30/15 f/w AWUR	18004	3,000	2,200	15:1	1/2"	1"	108	224	141	256	7.0	2
30/25 f/w AWUR	18006	3,000	2,200	25:1	1/2"	1"	108	224	141	256	7.0	2
45/26	18037	4,500	3,300	26:1	1/2"	1"	108*	224	175	-	8.7	4
60/25 f/w AWUR	18008	6,000	4,400	25:1	1/2"	1-1/2"	119	271	154	320	10.6	4
60/125 f/w AWUR	18012	6,000	4,400	125:1	1/2"	1-1/2"	119	301	172	350	12.1	4

* Maximum width 140mm



30, 45 & 60 Series

• No statement or data within this literature is warranted or guaranteed to be accurate. Multipliers available to buy or hire.

Whilst every effort has been made to ensure the availability of the models and specifications within this catalogue, our policy of continuous improvement means specifications and models are liable to change without notice. We reserve the right to change the specifications and models available for sale or hire and to supply equivalent products where appropriate.

W.CHRISTIE (INDUSTRIAL) LTD
 CHRISTIE HOUSE, MEADOWBANK ROAD,
 ROTHERHAM, SOUTH YORKSHIRE, S61 2NF, UK
 T : +44(0)1709 550088 F : +44(0)1709 550030
 E : INFO@WCHRISTIE.COM W : WWW.WCHRISTIE.COM

REGISTERED OFFICE: UNIT F7, FESTIVAL BUSINESS CENTRE,
 150 BRAND STREET, GLASGOW, G51 1DH SCOTLAND
 T: +44(0)141 427 9801 F: +44(0)141 427 9802
 E: WCHRISTIEGLW@BTCONNECT.COM
 REGISTRATION NO: SC 035247



CERTIFICATE NO: 2539/00