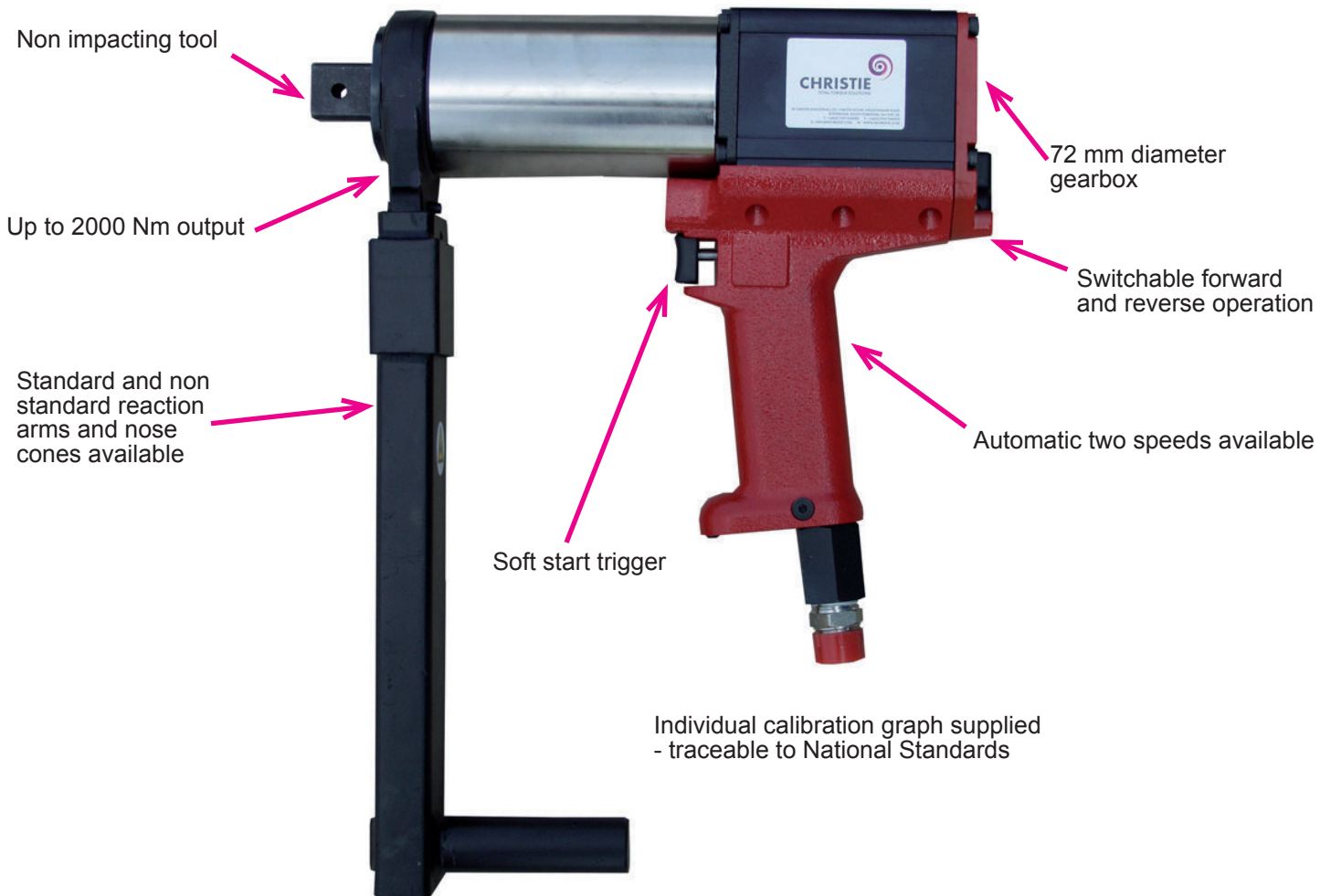


Pneutorque 72mm Pistol Grip Series

Technical Specifications

The 72 mm Pistol Grip Pneutorque is an air driven, non impacting torque multiplier producing torques of up to 2,000 Nm. Torque control is achieved by adjustment of the air pressure. A standard lubro unit and hose is supplied with all Pneutorques for hire.



• No statement or data within this literature is warranted or guaranteed to be accurate.

Whilst every effort has been made to ensure the availability of the models and specifications within this catalogue, our policy of continuous improvement means specifications and models are liable to change without notice. We reserve the right to change the specifications and models available for sale or hire and to supply equivalent products where appropriate.

W.CHRISTIE (INDUSTRIAL) LTD CHRISTIE HOUSE, MEADOWBANK ROAD, ROTHERHAM, SOUTH YORKSHIRE, S61 2NF, UK.
T : +44(0)1709 550088 F : +44(0)1709 550030 E : INFO@WCHRISTIE.COM W : WWW.WCHRISTIE.COM

Pneutorque 72mm Pistol Grip Series

Technical Specifications

Lubrication units designed for you

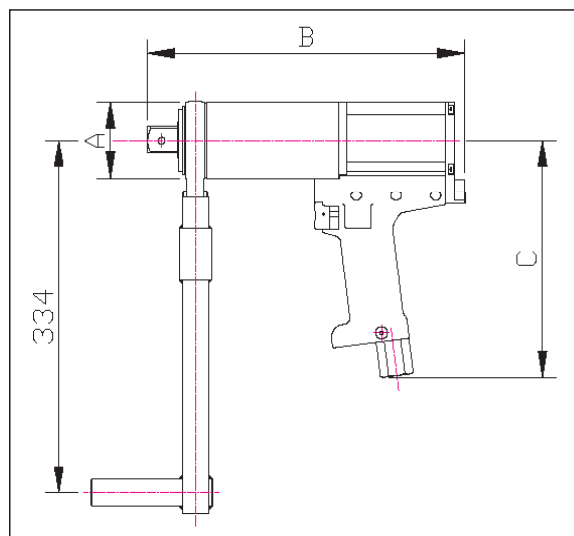


Torque control is achieved by adjustment of the air pressure via a C-RAD lubro installed between the air compressor and the pneutorque. The standard lubro reduces moisture content and lubricates the air supply.

Each lubrication unit is supplied with a standard 3 metre length of strengthened hose, however extended length hose can be provided.

On sites where water in air hoses is a real problem, lubro units can be offered with heavy duty water filters.

For protection to the lubro unit and to prevent tampering, caged and lockable models are available on request.



Model	Square Drive in	Part Code	Range		Free Speed* rpm	A mm	B mm	C mm	Tool Weight kg	Reaction Weight kg
			Nm	lbf.ft						
500	3/4"	18023	90-500	66-370	35	72	301	223	6.4	1.7
500 AUT	3/4"	18023.AUT	203-500	150-370	170	72	373	223	8.7	1.7
1000	3/4"	18022	190-1,000	140-740	15	72	301	223	6.4	1.7
1000 AUT	3/4"	18022.AUT	488-1,000	360-740	75	72	373	223	8.7	1.7
1000	1"	18026	190-1,000	140-740	15	72	301	223	6.4	1.7
1000 AUT	1"	18026.AUT	488-1,000	360-740	75	72	373	223	8.7	1.7
1500	1"	18021	300-1,500	220-1,110	9	72	301	223	6.4	1.7
1500 AUT	1"	18021.AUT	760-1,500	560-1,110	45	72	373	223	8.7	1.7
2000	1"	18033	400-2,000	300-1,450	6	72	301	223	6.4	1.7
2000 AUT	1"	18033.AUT	1,000-2,000	750-1,450	30	72	373	223	8.7	1.7

*No statement or data within this literature is warranted or guaranteed to be accurate.

Whilst every effort has been made to ensure the availability of the models and specifications within this catalogue, our policy of continuous improvement means specifications and models are liable to change without notice. We reserve the right to change the specifications and models available for sale or hire and to supply equivalent products where appropriate.

W.CHRISTIE (INDUSTRIAL) LTD

CHRISTIE HOUSE, MEADOWBANK ROAD,
ROTHERHAM, SOUTH YORKSHIRE, S61 2NF, UK
T : +44(0)1709 550088 F : +44(0)1709 550030
E : INFO@WCHRISTIE.COM W : WWW.WCHRISTIE.COM

REGISTERED OFFICE: UNIT F7, FESTIVAL BUSINESS CENTRE,
150 BRAND STREET, GLASGOW, G51 1DH SCOTLAND
T : +44(0)141 427 9801 F : +44(0)141 427 9802
E : WCHRISTIEGLW@BTCONNECT.COM
REGISTRATION NO: SC 035247



CERTIFICATE NO: 2539/00