

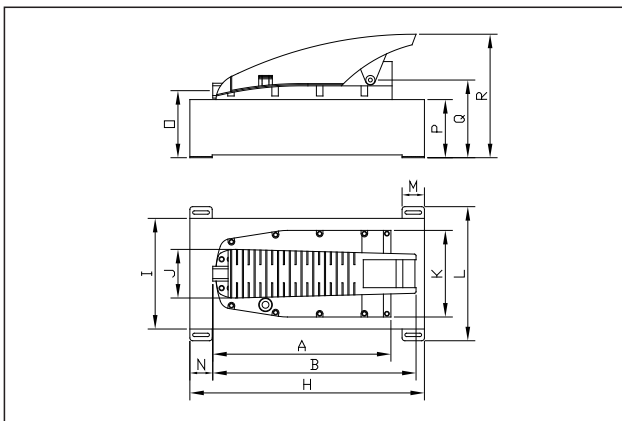
# AHP 11 Air Driven Single Stage Hydraulic Pumps

An economical, single stage air powered hydraulic pump. Ideal for maintenance and construction projects. With a choice of reservoir capacities, all models are pre-filled with hydraulic oil for immediate use.

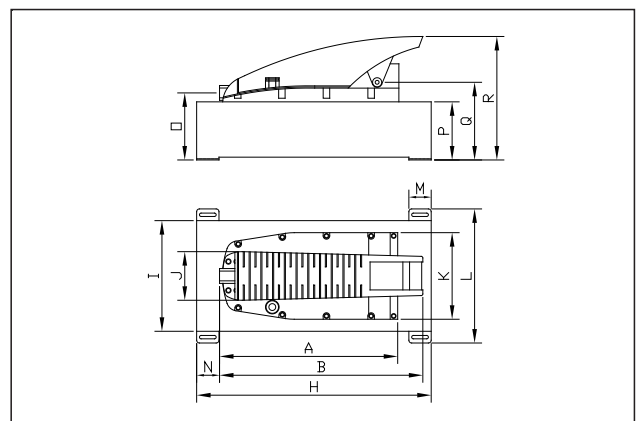
- Working pressure 700 Bar
- Operates from standard 7 Bar air supply
- Choice of 2-way or 4-way control valves
- Internal safety overload valve
- Reservoir oil sight level gauge
- Standard oil reservoir capacities up to 10 litres
- Compact, lightweight & powerful

Available for purchase ONLY

Model number	Max. Pressure	Max. flow rate	Valve type	Usable oil capacity	Air inlet connection	Oil outlet connection	Weight
	bar	l/min		Litres	G	NPTF	
AHP1120	700	0.8	2-way	2.4	1/4"	3/8"	4.7
AHP1121	700	0.8	2-way	5.0	1/4"	3/8"	9.0
AHP1122	700	0.8	2-way	10.0	1/4"	3/8"	17.8
AHP1141	700	0.8	4-way	5.0	1/4"	3/8"	9.5
AHP1142	700	0.8	4-way	10.0	1/4"	3/8"	18.3



AHP1120



AHP 1121/1122/1141/1142

Note: AHP1141 & AHP1142 includes 4-way manual directional control valve (not pictured)

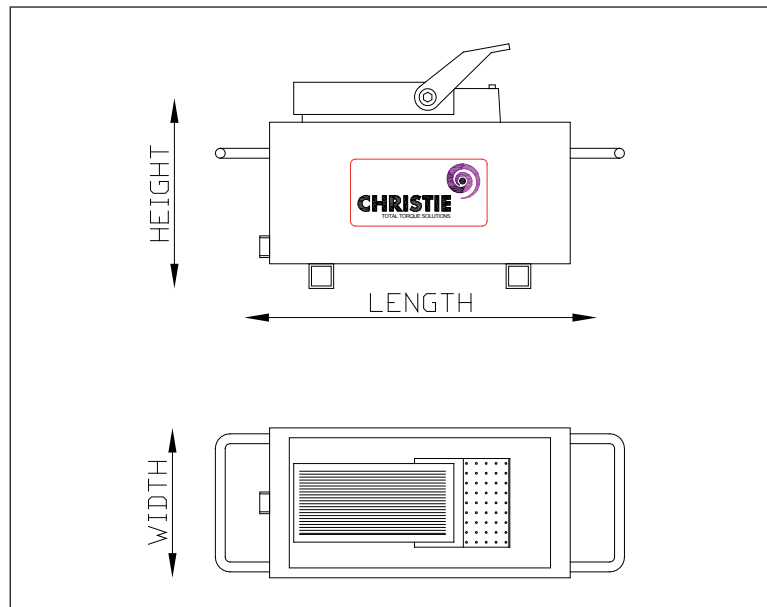
Model number	Dimensions in mm																	
	A	B	C	D	E	F	G	H	I	J	K	L	M	N	O	P	Q	R
AHP1120	319	364	87	155	108	127	209	-	-	-	-	-	-	-	-	-	-	-
AHP1121	319	364	-	-	-	-	-	420	198	87	155	240	40	41	120	104	139	221
AHP1122	319	364	-	-	-	-	-	460	210	87	155	-	-	-	171	155	180	271
AHP1141	319	364	-	-	-	-	-	420	198	87	155	240	40	41	120	104	139	221
AHP1142	319	364	-	-	-	-	-	460	210	87	155	-	-	-	171	155	180	271

• No statement or data within this literature is warranted or guaranteed to be accurate.

Whilst every effort has been made to ensure the availability of the models and specifications within this catalogue, our policy of continuous improvement means specifications and models are liable to change without notice. We reserve the right to change the specifications and models available for sale or hire and to supply equivalent products where appropriate.

# HAP Air Driven Single Speed Hydraulic Pumps

- Oil sight level gauge fitted as standard
- Working pressure 700 Bar
- Choice of 5 litre or 10 litre reservoir
- Powerful air motor
- Internal safety overload valve
- Choice of single or double acting valve



Available for Hire ONLY

Model Number	Maximum Working Pressure (bar)	Valve Type	Usable Oil Capacity (litres)	Airline Pressure Required		Outlet Ports	Dimensions (mm)			Weight (less lever) (kg)
				(bar)	(l/min)		Length	Width	Height	
HAP1021	700	2 Way	5.0	7.0	567	3/8" - 18NPT	305	152	248	12.5
HAP1022	700	2 Way	10.0	7.0	567	3/8" - 18NPT	540	210	285	19.0
HAP1041	700	4 Way	5.0	7.0	567	3/8" - 18NPT	305	152	248	13.2
HAP1042	700	4 Way	10.0	7.0	567	3/8" - 18NPT	540	210	285	19.7

• No statement or data within this literature is warranted or guaranteed to be accurate.

Whilst every effort has been made to ensure the availability of the models and specifications within this catalogue, our policy of continuous improvement means specifications and models are liable to change without notice. We reserve the right to change the specifications and models available for sale or hire and to supply equivalent products where appropriate.

**W.CHRISTIE (INDUSTRIAL) LTD**  
CHRISTIE HOUSE, MEADOWBANK ROAD,  
ROTHERHAM, SOUTH YORKSHIRE, S61 2NF, UK  
T : +44(0)1709 550088 F : +44(0)1709 550030  
E : INFO@WCHRISTIE.COM W : WWW.WCHRISTIE.COM

REGISTERED OFFICE: UNIT F7, FESTIVAL BUSINESS CENTRE,  
150 BRAND STREET, GLASGOW, G51 1DH SCOTLAND  
T: +44(0)141 427 9801 F: +44(0)141 427 9802  
E: WCHRISTIEGLW@BTCONNECT.COM  
REGISTRATION NO: SC 035247

