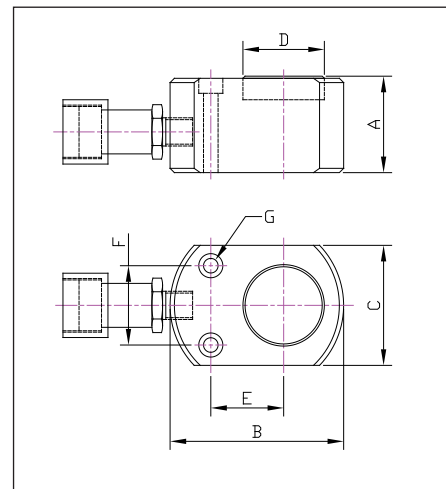


HPS Single Acting Low Height Pad Cylinders

Technical Specifications

Ideally suited for applications where a closed height and maximum possible stroke is important. Extensively used for maintenance, structural weld positioning, rigging, flange separating and many other applications.

- Capacities from 4.5 to 147 tonnes
- Stroke lengths from 6 to 16mm
- Working pressure 700 Bar
- Single acting, spring assisted return
- Surface treated piston rod
- Low friction bearing surfaces
- Anti-extrusion seals



Model Number	Available for Hire	Maximum Cylinder Capacity Tonnes	Stroke mm	Cylinder Effective Area cm ²	Oil Capacity cm ³	Closed Height (A) mm	Cylinder O.Dia (B) mm	Cylinder Width (C) mm	Piston Dia (D) mm	Piston CL to Mount Holes (E) mm	Hole Centres (F) mm	Hole Dia (G) mm	Weight kg
HPS50		4.5	6	6.4	4	32	60	38	24	20	26	5.6	0.8
HPS51	•	4.5	16	6.4	10	42	60	38	24	20	26	5.6	0.9
HPS100	•	10	10	14.4	14	45	81	56	38	34	37	6.8	1.6
HPS200	•	20	11	28.6	31	52	100	76	51	40	50	8.8	2.6
HPS300	•	32	12	45.6	55	59	115	95	60	46	52	8.8	4.2
HPS500	•	50	15	71.3	107	67	140	114	70	54	67	10.8	6.6
HPS750		73	16	102.7	164	81	165	140	82	67	76	13	10.4
HPS1000		109	16	153.4	245	91	215	180	114	75	130	12.8	23.2
HPS1500		147	16	206.2	330	100	215	191	114	83	117	13	28.5

• No statement or data within this literature is warranted or guaranteed to be accurate.

Whilst every effort has been made to ensure the availability of the models and specifications within this catalogue, our policy of continuous improvement means specifications and models are liable to change without notice. We reserve the right to change the specifications and models available for sale or hire and to supply equivalent products where appropriate.