

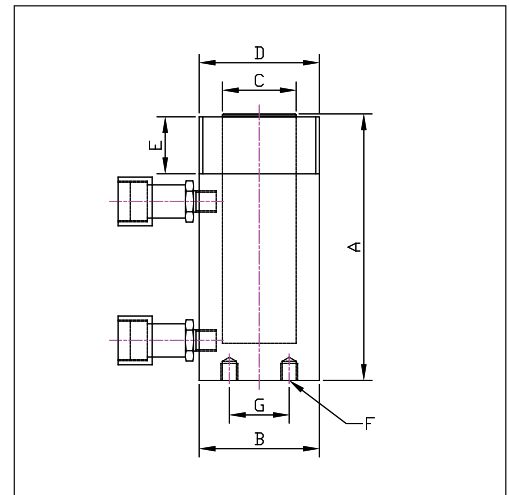
HDR Double Acting Cylinders

Technical Specifications

Double acting design provides substantial pulling force in the piston retraction mode as well as providing fast, controlled retraction for continuous duty cycle operation.

Specifically designed for heavy duty lifting, construction & maintenance applications as well as presswork and industrial production.

- Capacities from 25 to 520 tonnes
- Stroke lengths from 150 to 330mm
- Working pressure 700 Bar
- Internal annular area overload protection valve
- Low friction bearing areas
- Surface treated piston rod
- Anti-extrusion seals
- Base mounting holes



Up to 203 tonnes:

- Flat saddle
- Piston rod thread
- Collar thread

From 326 tonnes:

- Tilting saddle
- Piston without thread
- Excluding collar thread

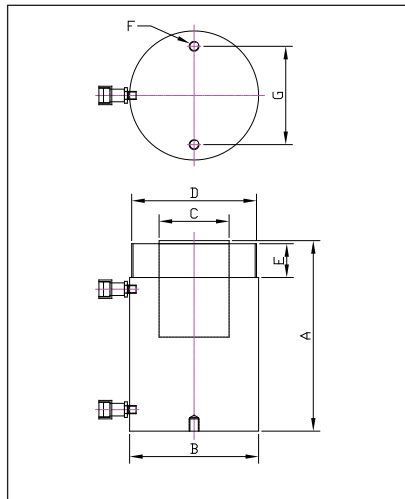
Model Number	Available for Hire	Maximum Cylinder Capacity Tonnes	Stroke mm	Cylinder Effective Area cm ²	Oil Capacity Litres	Closed Height (A) mm	Cylinder O/Dia (B) mm	Piston Dia (C) mm	Collar Thread (D) inches	Collar Thread Length (E) mm	Base Mounting Holes (F)	PCD (G) mm	Weight kg
HDR506		50 PUSH 15 PULL	150	71.40 22.00	1.07 0.329	300	127	79	5 x 12 UN	55	M12 x 1.75	85	22.8
HDR5013		50 PUSH 15 PULL	330	71.40 22.00	2.356 0.726	478	127	79	5 x 12 UN	55	M12 x 1.75	85	37.2
HDR1006	•	107 PUSH 35 PULL	150	153.20 51.00	2.3 0.765	330	178	114	6-7/8 x 12 UN	51	M12 x 1.75	146	50.0
HDR10013		107 PUSH 35 PULL	330	153.20 51.00	5.005 1.685	508	178	114	6-7/8 x 12 UN	51	M12 x 1.75	146	75.0

• No statement or data within this literature is warranted or guaranteed to be accurate.

Whilst every effort has been made to ensure the availability of the models and specifications within this catalogue, our policy of continuous improvement means specifications and models are liable to change without notice. We reserve the right to change the specifications and models available for sale or hire and to supply equivalent products where appropriate.

HDA Double Acting Cylinders

Technical Specifications



Aluminium Models - Available for purchase

Model Number	Maximum Cylinder Capacity Tonnes	Stroke mm	Cylinder Effective Area cm ²	Oil Capacity Litres	Closed Height (A) mm	Cylinder O/Dia (B) mm	Piston Dia (C) mm	Collar Thread (D) inches	Collar Thread Length (E) mm	Base Mounting Holes (F)	PCD (G) mm	Weight kg
HDA256	25 PUSH 10 PULL	152	34.9	0.53	287	92	50	3-5/16" x 12 UN	53	M10	60	15.0
HDA506	50 PUSH 15 PULL	152	71.3	1.08	295	127	79	5" x 12 UN	55	M12	85	28.4
HDA5013	50 PUSH 15 PULL	330	71.3	2.35	473	127	79	5" x 12 UN	55	M12	85	42.6
HDA1006	109 PUSH 36 PULL	152	153.3	2.33	304	178	114	6-7/8" x 12 UN	51	M12	146	64.5
HDA10013	109 PUSH 36 PULL	330	153.3	5.06	482	178	114	6-7/8" x 12 UN	51	M12	146	89.0
HDA1506	152 PUSH 79 PULL	152	214.2	3.26	310	210	114	8" x 12 UN	55	M16	160	90.0
HDA15012	152 PUSH 79 PULL	305	214.2	6.53	463	210	114	8" x 12 UN	55	M16	160	120.5
HDA2006	203 PUSH 94 PULL	152	285.2	4.33	327	254	140	9-3/4" x 12 UN	65	M20	185	127.4
HDA20012	203 PUSH 94 PULL	305	285.2	8.69	480	254	140	9-3/4" x 12 UN	65	M20	185	165.0
HDA3006	326 PUSH -	152	457.4	6.95	366	312	165	Optional	Optional	M20	158	214.2
HDA4006	398 PUSH -	152	558.9	8.49	394	360	216	Optional	Optional	M24	203	312.7
HDA5006	520 PUSH	152	729.9	11.09	435	397	203	Optional	Optional	M24	203	413.5

• No statement or data within this literature is warranted or guaranteed to be accurate.

Whilst every effort has been made to ensure the availability of the models and specifications within this catalogue, our policy of continuous improvement means specifications and models are liable to change without notice. We reserve the right to change the specifications and models available for sale or hire and to supply equivalent products where appropriate.