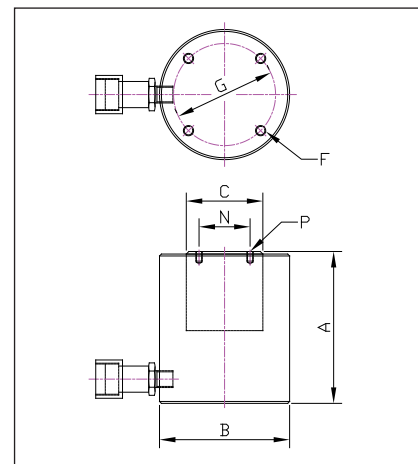


# HLS Single Acting Low Height Cylinders

## Technical Specifications

Compact and powerful force for a wide variety of applications in many industries, including power generation, ship building & repair, construction, railways, mining, steel works, oil & gas and many

- Capacities from 10 to 147 tonnes
- Stroke lengths from 25mm to 60mm
- Working pressure 700 Bar
- Spring assisted return
- Surface treated piston rod
- Low friction bearing surfaces
- Anti-extrusion seals
- Optional tilting saddles
- Compact & portable



Model Number	Available for Hire	Maximum Cylinder Capacity Tonnes	Stroke mm	Cylinder Effective Area mm	Oil Capacity cm <sup>3</sup>	Closed Height (A) cm <sup>2</sup>	Cylinder O/Dia (B) mm	Piston Dia (C) mm	Base Mounting Holes (F)	Base PCD (G) mm	Piston Mounting Holes (P) mm	Top PCD (N) mm	Weight kg
HLS101	•	10	40	14.4	58	95	70	38	M8	40	M4	26	2.4
HLS201	•	20	44	28.6	126	102	90	51	M8	60	M5	40	4.8
HLS301		32	25	45.6	114	83	102	60	M8	80	M5	40	5.0
HLS302	•	32	60	45.6	274	119	102	60	M8	80	M5	40	7.0
HLS501		50	25	71.3	178	91	127	70	M8	80	M5	40	8.4
HLS502	•	50	60	71.3	428	126	127	70	M8	80	M5	40	10.4
HLS1001		109	25	153.4	384	108	178	114	M12	140	M8	55	19.8
HLS1002	•	109	60	153.4	921	143	178	114	M12	140	M8	55	24.0
HLS1501		147	25	206.2	516	130	216	114	M12	165	M8	75	37.0
HLS1502		147	50	206.2	1031	155	216	114	M12	165	M8	75	42.0

• No statement or data within this literature is warranted or guaranteed to be accurate.

Whilst every effort has been made to ensure the availability of the models and specifications within this catalogue, our policy of continuous improvement means specifications and models are liable to change without notice. We reserve the right to change the specifications and models available for sale or hire and to supply equivalent products where appropriate.

### W.CHRISTIE (INDUSTRIAL) LTD

CHRISTIE HOUSE, MEADOWBANK ROAD,  
ROTHERHAM, SOUTH YORKSHIRE, S61 2NF, UK  
T : +44(0)1709 550088 F : +44(0)1709 550030  
E : INFO@WCHRISTIE.COM W : WWW.WCHRISTIE.COM

REGISTERED OFFICE: UNIT F7, FESTIVAL BUSINESS CENTRE,  
150 BRAND STREET, GLASGOW, G51 1DH SCOTLAND  
T: +44(0)141 427 9801 F: +44(0)141 427 9802  
E: WCHRISTIEGLW@BTCONNECT.COM  
REGISTRATION NO: SC 035247



CERTIFICATE NO: 2539/00