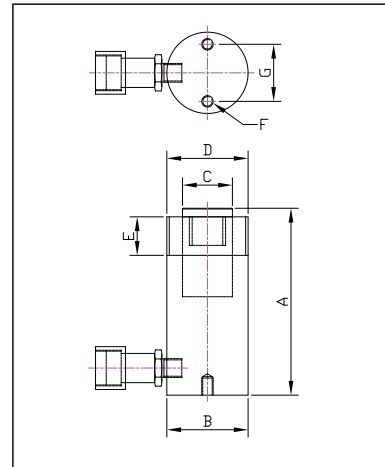


HSS Single Acting Spring Assisted Return Cylinders

Technical Specifications

Excellent choice for maintenance, production, fabrication and construction applications. Major user industries include power generation, railways, steelworks, mining, shipyards and oil & gas.

- Capacities from 4.5 to 109 tonnes
- Stroke lengths from 25 to 457mm
- Working pressure 700 Bar
- Spring assisted return
- Surface treated piston rod
- Low friction bearing surfaces
- Anti-extrusion seals
- Collar threads withstand full load
- Base & piston rod mounting on most models
- Optional piston rod saddles



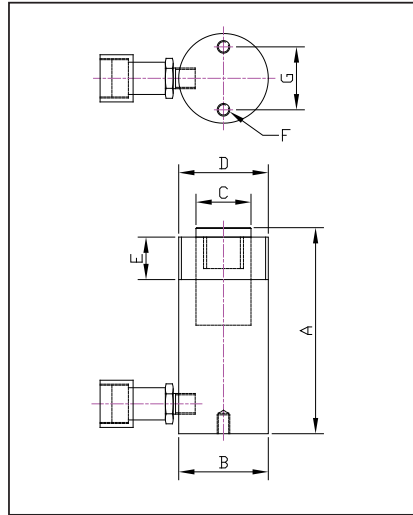
Model Number	Available for Hire	Maximum Cylinder Capacity Tonnes	Stroke mm	Cylinder Effective Area cm ²	Oil Capacity cm ³	Closed Height (A) mm	Cylinder O.Dia (B) mm	Piston Dia (C) mm	Collar Thread (D) mm	Collar Thread Length (E) inches	Base Mounting Holes (F)	PCD (G) mm	Weight kg
HSS51		4.5	25	6.4	16	107	38	24	1-1/2 x 16 UN	28	M6 x 1.0	25	1.0
HSS52	•	4.5	50	6.4	32	132	38	24	1-1/2 x 16 UN	28	M6 x 1.0	25	1.2
HSS53		4.5	75	6.4	48	157	38	24	1-1/2 x 16 UN	28	M6 x 1.0	25	1.4
HSS54		4.5	100	6.4	64	182	38	24	1-1/2 x 16 UN	28	M6 x 1.0	25	1.5
HSS55		4.5	125	6.4	80	207	38	24	1-1/2 x 16 UN	28	M6 x 1.0	25	1.8
HSS101		10	25	14.4	36	100	57	35	2-1/4 x 14 UN	27	M8	40	1.8
HSS102	•	10	56	14.4	81	131	57	35	2-1/4 x 14 UN	27	M8 x 1.25	40	2.4
HSS104	•	10	100	14.4	144	175	57	35	2-1/4 x 14 UN	27	M8 x 1.25	40	3.0
HSS106	•	10	150	14.4	217	225	57	35	2-1/4 x 14 UN	27	M8 x 1.25	40	4.2
HSS108		10	206	14.4	297	281	57	35	2-1/4 x 14 UN	27	M8	40	5.0
HSS1010	•	10	250	14.4	361	325	57	35	2-1/4 x 14 UN	27	M8 x 1.25	40	5.4
HSS1012		10	305	14.4	440	379	57	35	2-1/4 x 14 UN	27	M8	40	6.2

• No statement or data within this literature is warranted or guaranteed to be accurate.

Whilst every effort has been made to ensure the availability of the models and specifications within this catalogue, our policy of continuous improvement means specifications and models are liable to change without notice. We reserve the right to change the specifications and models available for sale or hire and to supply equivalent products where appropriate.

HSS Single Acting Spring Assisted Return Cylinders

Technical Specifications



Model Number	Available for Hire	Maximum Cylinder Capacity Tonnes	Stroke mm	Cylinder Effective Area cm ²	Oil Capacity cm ³	Closed Height (A) mm	Cylinder O.Dia (B) mm	Piston Dia (C) mm	Collar Thread (D) inches	Collar Thread Length (E) mm	Base Mounting Holes (F)	PCD (G) mm	Weight kg
HSS152		14.5	50	20.3	101	154	70	41	2-3/4" x 16un	39	M10	48	3.4
HSS154		14.5	100	20.3	203	204	70	41	2-3/4" x 16un	39	M10	48	5.0
HSS156		14.5	150	20.3	304	254	70	41	2-3/4" x 16un	39	M10	48	6.6
HSS1510		14.5	250	20.3	507	354	70	41	2-3/4" x 16un	39	M10	48	8.8
HSS252		25.0	51	34.9	178	174	86	54	3-5/16" x 12un	49	M12	60	6.5
HSS254		25	102	34.9	356	225	86	54	3-5/16" x 12un	49	M12	60	8.0
HSS256	•	25	150	34.9	524	273	86	54	3-5/16" x 12un	49	M12	60	9.6
HSS2510		25	250	34.9	874	374	86	54	3-5/16" x 12un	49	M12	60	12.6
HSS2514		25	356	34.9	1242	480	86	54	3-5/16" x 12un	49	M12	60	16.8
HSS2518		25	457	34.9	1597	611	86	54	3-5/16" x 12un	49	M12	60	21.4
HSS308	•	29	205	41.9	860	374	102	57	3-5/16" x 12un	50	-	-	18.6
HSS502		50	51	71.3	364	150	127	79	5" x 12un	55	M12	85	13.0
HSS504		50	102	71.3	728	201	127	79	5" x 12un	55	M12	85	16.8
HSS506	•	50	152	71.3	1084	251	127	79	5" x 12un	55	M12	85	20.0
HSS508		50	203	71.3	1448	302	127	79	5" x 12un	55	M12	85	23.2
HSS5013		50	330	71.3	2354	429	127	79	5" x 12un	55	M12	85	33.6
HSS756		73	152	102.7	1561	272	146	95	5-3/4" x 12un	45	M12	115	31.0
HSS1004		109	102	153.4	1565	223	185	114	6-7/8" x 12un	50	M12	146	41.6
HSS1006	•	109	153	153.4	2347	274	185	114	6-7/8" x 12un	50	M12	146	49.8
HSS10010		109	254	153.4	3896	375	185	114	6-7/8" x 12un	50	M12	146	65.5

• No statement or data within this literature is warranted or guaranteed to be accurate.

Whilst every effort has been made to ensure the availability of the models and specifications within this catalogue, our policy of continuous improvement means specifications and models are liable to change without notice. We reserve the right to change the specifications and models available for sale or hire and to supply equivalent products where appropriate.