

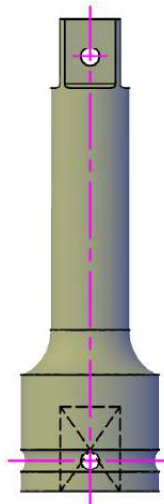


Ancillaries

Available to Buy or Hire

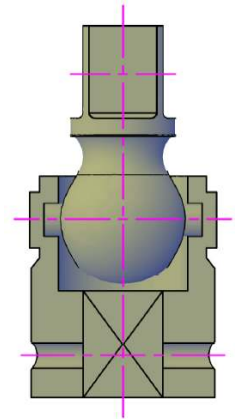
Extension Bars

Bar Length	Square Drive					
	3/8"	1/2"	3/4"	1"	1.1/2"	2.1.2"
3"	•	•	•	•		
4"	•	•	•	•		
5"	•	•	•	•		
6"	•	•	•	•	•	
7"		•	•	•	•	
9"		•	•	•	•	•
10"		•	•	•	•	•
12"		•	•	•	•	•
13"		•	•	•	•	•
15"		•	•	•	•	•
18"		•	•	•	•	•
24"		•	•	•	•	•
36"					•	•



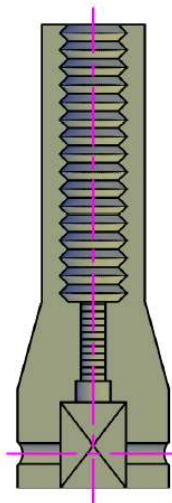
Universal Joints

Part No.	Size
UJ1	1/4"
UJ2	3/8"
UJ3	1/2"
UJ5	3/4"
UJ6	1"
UJ8	1.1/2"
UJ9	2.1/2"



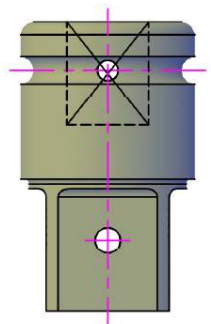
Stud Runners

Bolt Size	Square Drive				
	BS UN	3/8"	1/2"	3/4"	1"
M4		•	•		
M5		•	•		
M6	1/4"	•	•		
M8	5/16"	•	•		
M10	3/8"	•	•		
M12	1/2"	•	•	•	•
M16	5/8"	•	•	•	•
M20	3/4"		•	•	•
M22	7/8"		•	•	•
M24	1"		•	•	•
M27	1.1/16"		•	•	•
M30	1.1/8"		•	•	•
M33	1.5/16"		•		
M36	1.3/8"		•		
M39	1.1/2"		•		
M42	1.5/8"		•		
M48	1.7/8"		•		
M52	2"		•		
M56	2.1/4"		•		
M64	2.1/2"		•		



Impact Socket Adaptors

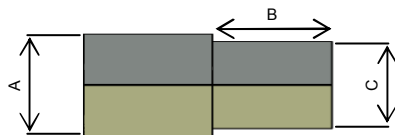
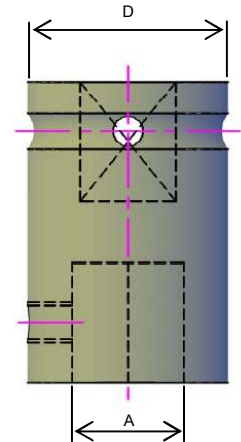
Part No.	Imperial	
	Female	Male
SA2 - 1	3/8"	1/4"
SA2 - 3	3/8"	1/2"
SA3 - 2	1/2"	3/8"
SA3 - 4	1/2"	5/8"
SA3 - 5	1/2"	3/4"
SA4 - 3	5/8"	1/2"
SA4 - 5	5/8"	3/4"
SA5 - 3	3/4"	1/2"
SA5 - 4	3/4"	5/8"
SA5 - 6	3/4"	1"
SA6 - 5	1"	3/4"
SA6 - 7	1"	1.1/4"
SA6 - 8	1"	1.1/2"
SA7 - 6	1.1/4"	1"
SA7 - 8	1.1/4"	1.1/2"
SA8 - 6	1.1/2"	1"
SA8 - 7	1.1/2"	1.1/4"
SA8 - 9	1.1/2"	2.1/2"
SA9 - 8	2.1/2"	1.1/2"
SA9 - 10	2.1/2"	3.1/2"
SA10 - 9	3.1/2"	2.1/2"
SAS - 6	Spline	1"
SAS - 8	Spline	1.1/2"



HOLDERS with Insert Bits for Allen Headed Screws

Holders

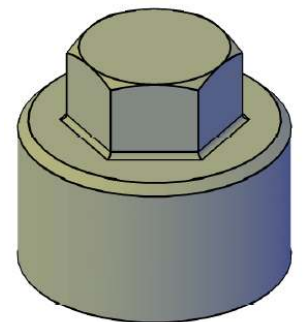
Sq. Drive	Female Hex. (A)	Dia. (D) mm	Part No
1/2"	7/16"	25	H3 - A7/16
1/2"	7/8"	39	H3 - A7/8
3/4"	7/8"	40	H5 - A7/8
1"	7/8"	54	H6 - A7/8
1"	1.1/4"	63	H6 - A1 1/4
1.1/2"	1.1/4"	83	H8 - A1 1/4
1.1/2"	1.3/4"	94	H8 - A1 3/4



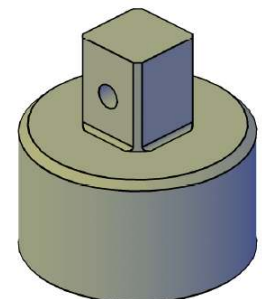
Bits

Metric Part No.	Compatible Holder	Internal Dimensions			Imperial Part No.	Compatible Holder	Internal Dimensions		
		In.	mm				In.	mm	
		A	C	B			A	C	B
A7/16 - 6	H3 - A7/16	7/16"	6	14	A7/16 - 1/4	H3 - A7/16	7/16"	1/4"	14
A7/16 - 8			8		A7/16 - 5/16			5/16"	
A7/16 - 10			10		A7/16 - 3/8			3/8"	
A7/16 - 12			12		A7/16 - 7/16			7/16"	
-			-		A7/16 - 1/2			1/2"	
A7/16 - 14			14		A7/16 - 9/16			9/16"	
A7/8 - 10	H3 - A7/8 H5 - A7/8 H6 - A7/8	7/8"	10	25	A7/8 - 3/8	H3 - A7/8 H5 - A7/8 H6 - A7/8	7/8"	3/8"	25
A7/8 - 12			12		A7/8 - 1/2			1/2"	
A7/8 - 14			14		A7/8 - 9/16			9/16"	
A7/8 - 17			17		A7/8 - 5/8			5/8"	
A7/8 - 19			19		A78 - 3/4			3/4"	
A7/8 - 22			22		A7/8 - 13/16			13/16"	
-			24		A7/8 - 7/8			7/8"	
A7/8 - 24			-		A7/8 - 1			1"	
A1 1/4 - 27	H6 - A1 1/4 H8 - A1 1/4	1.1/4"	27	30	A11/4 - 1	H6 - A1 1/4 H8 - A1 1/4	1.1/4"	1"	30
A1 1/4 - 30			30		A11/4 - 11/16			1.1/16"	
A1 1/4 - 32			32		A11/4 - 11/8			1.1/8"	
A1 1/4 - 33			33		A11/4 - 13/16			1.3/16"	
-			-		A11/4 - 11/4			1.1/4"	
-	-	A11/4 - 15/16	1.5/16"						
A1 3/4 - 36	H8 - 1.3/4"	1.3/4"	36	35	A13/4 - 13/8	H8 - 1.3/4"	1.3/4"	1.3/8"	35
A1 3/4 - 41			41		A13/4 - 11/2			1.1/2"	
A1 3/4 - 46			46		A13/4 - 15/8			1.5/8"	
A1 3/4 - 50			-		A13/4 - 13/4			1.3/4"	
-			-		A13/4 - 17/8			1.7/8"	
-			50		A13/4 - 2			2"	

Hexagonal Drive Sockets



Male Square Drive Sockets



Wide range available.
Please contact us with your requirements



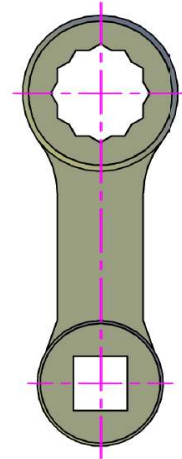
Offset Wrenches

Imperial

Metric

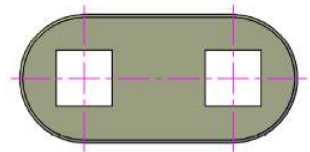
A/F Imperial	Sq. Size		
	3/4"	1"	1.1/2"
1"	•	•	•
1.1/16"	•	•	•
1.1/8"	•	•	•
1.1/4"	•	•	•
1.3/16"	•	•	•
1.5/16"	•	•	•
1.3/8"	•	•	•
1.1/2"	•	•	•
1.7/16"	•	•	•
1.5/8"	•	•	•
1.11/16"	•	•	•
1.3/4"	•	•	•
1.13/16"	•	•	•
1.7/8"	•	•	•
2.1/16"	•	•	•
2.1/8"	•	•	•
2.3/16"	•	•	•
2.1/4"	•	•	•
2.3/8"	•	•	•
2.7/16"	•	•	•
2.9/16"	•	•	•
2.5/8"	•	•	•
2.3/4"	•	•	•
3"	•	•	•
3.1/8"	•	•	•
3.3/8"	•	•	•
3.1/2"	•	•	•
3.3/4"	•	•	•
3.7/8"	•	•	•
4"	•	•	•

A/F mm	Sq. Size		
	3/4"	1"	1.1/2"
24	•	•	•
27	•	•	•
30	•	•	•
32	•	•	•
36	•	•	•
41	•	•	•
46	•	•	•
50	•	•	•
52	•	•	•
55	•	•	•
60	•	•	•
65	•	•	•
70	•	•	•
75	•	•	•
80	•	•	•
85	•	•	•
90	•	•	•
95	•	•	•
100	•	•	•
105	•	•	•
110	•	•	•
115	•	•	•



Drive Offsets

Size	
Sq. Drive	Centres
3/4"	1.1/4"
3/4"	3.1/4"
1"	1.3/4"
1"	4.1/2"
1.1/2"	6"
1.1/2"	9"



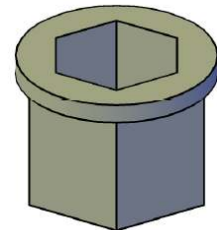
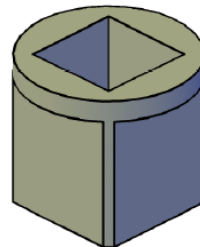
Hexagon & Square Drive Reducing Sleeves

Hexagon Sleeve Inserts

Male Hex. A/F mm	46	50	55	60	65	70	75	80	85	90	95	100	110	120	130

Square Drive Sleeve Inserts

Part No.	Imperial	
	Female Sq.	Male Sq.
RS3 - 1	1/4"	1/2"
RS4 - 3	1/2"	5/8"
RS5 - 3	1/2"	3/4"
RS6 - 5	3/4"	1"
RS8 - 6	1"	1.1/2"
RS9 - 8	1.1/2"	2.1/2"
RS10 - 9	2.1/2"	3.1/2"



W. CHRISTIE (INDUSTRIAL) LTD

CHRISTIE HOUSE, MEADOWBANK ROAD,
ROTHERHAM, SOUTH YORKSHIRE, S61 2NF UK
T: +44(0)1709 550088 F: +44(0)1709 550030
E: INFO@WCHRISTIE.COM W: WWW.WCHRISTIE.COM

REGISTERED OFFICE: UNIT F7, FESTIVAL BUSINESS CENTRE,
150 BRAND STREET, GLASGOW, G51 1DH, SCOTLAND
T: +44(0)141 427 9801 F: +44(0)141 427 9802
E: WCHRISTIEGLW@BTCONNECT.COM
REGISTRATION NO: SC 035247

